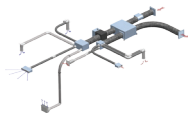


Air renewal and purification unit, full fresh air

With return/exhaust and thermodynamic heat recovery
Reversible heat pump
Indoor installation

Air flow rate from 70 to 500 m³/h



ELFOAir is the modular air distribution system with manifolds designed and created to integrate perfectly with ELFOFresh² and guarantee its best performance.

- It aids the work of the DESIGNER thanks to the use of modular components;
- It simplifies the lay out for the INSTALLER because of the intuitive connection of its parts;
- It satisfied the USER because of its quietness and design of the displayed elements.

ELFOFresh²

ELFOFresh² is the innovative renewal and purification unit for consistently clean air, at the right temperature and the right level of humidity, for total wellbeing in the home.

At the same time, ELFOFresh² also recovers the energy contained in the exhaust air flow, multiplying it thanks to the heat pump technology and supplying it to the serviced rooms. In this way it reduces the fresh air load and supplies additional capacity, helping to maintain comfortable conditions.

The main characteristics are:

- ▶ High efficiency summer and winter **active thermodynamic heat recovery**
- ▶ **80% satisfaction of the building's heating requirement**
- ▶ **Reduced consumption** and simplified system
- ▶ **Electronic filtration** for effective protection against even the most insidious pollutants (i.e. PM10, bacteria, pollen)
- ▶ **Summer dehumidification**, ideal for combination with radiant cooling
- ▶ **Free-Cooling**

functions and features

Heat pump



Air cooled



Indoor installation

R-134a
(sizes 70-120)R-410A
(sizes 200-500)

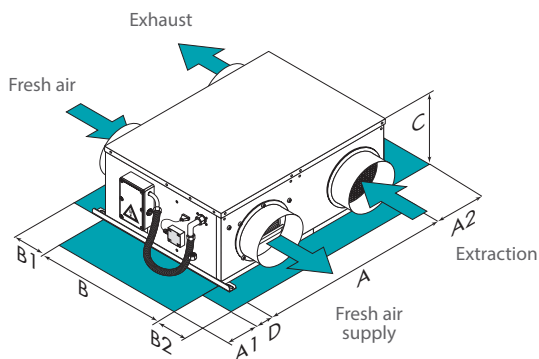
Hermetic Rotary

ELFOControl²

FREE-COOLING

Active
thermodynamic
recovery

DC Motor

dimensions and clearances

CAUTION! For trouble-free operation of the unit it is essential to maintain the safety distances indicated by the green areas.

Size – CPAN-U		70	120
A - Length	mm	800	800
B - Width	mm	690	690
C - Height	mm	266	266
A1	mm	20	20
A2	mm	500	500
B1	mm	300	300
B2	mm	300	300
Operating weight	kg	40	43

Size – CPAN-U		200	300	500
A - Length	mm	922	922	1158
B - Width	mm	704	704	741
C - Height	mm	364	364	423
D - Length	mm	120	120	120
A1	mm	620	620	620
A2	mm	20	20	20
B1	mm	300	300	300
B2	mm	300	300	300
Operating weight	kg	70	75	95

The above mentioned data are referred to standard units for the constructive configurations indicated. For all the other configurations, refer to the relative Technical Bulletin.

versions and configurations

OPERATION:

- ▶ - Cooling and heating operation (sizes 120÷500 only, Standard)
- ▶ **OHO** Heating-only operation (sizes 120÷500)

technical data

Size – CPAN-U		70	120
A7			
▶ Heating capacity	kW	0,52	0,98
Total power input	kW	0,15	0,25
COP (EN 14511:2013)	-	3,38	3,90
A-5			
▶ Heating capacity	kW	0,52	0,97
Total power input	kW	0,12	0,20
COP (EN 14511:2013)	-	4,17	4,74
A30			
▶ Cooling capacity	kW	0,43	0,81
Total power input	kW	0,19	0,32
EER (EN 14511:2013)	-	2,27	2,58
A35			
▶ Cooling capacity	kW	0,45	0,85
Total power input	kW	0,20	0,33
EER (EN 14511:2013)	-	2,24	2,54
Supply airflow	l/s	19,4	33,3
Max. static pressure supply fan	Pa	120	120
Standard power supply	V	230/1/50	230/1/50
Min. entering air temperature (D.B.)	(2) °C	-15	-15
Sound pressure level	(1) dB(A)	37	38

Size – CPAN-U		200	300	500
A7				
▶ Heating capacity	kW	1,81	2,33	3,58
Total power input	kW	0,44	0,59	0,84
COP (EN 14511:2013)	-	4,11	3,95	4,26
A-5				
▶ Heating capacity	kW	1,86	2,35	3,74
Total power input	kW	0,36	0,43	0,67
COP (EN 14511:2013)	-	5,17	5,47	5,58
A30				
▶ Cooling capacity	kW	1,57	2,10	3,01
Total power input	kW	0,54	0,70	1,04
EER (EN 14511:2013)	-	2,91	3,00	2,89
A35				
▶ Cooling capacity	kW	1,63	2,17	3,13
Total power input	kW	0,57	0,73	1,10
EER (EN 14511:2013)	-	2,86	2,97	2,85
Supply airflow	l/s	55,0	83,0	139
Max. static pressure supply fan	Pa	120	120	120
Standard power supply	V	230/1/50	230/1/50	230/1/50
Min. entering air temperature (D.B.)	(2) °C	-15	-15	-15
Sound pressure level	(1) dB(A)	39	41	44

Notes

- (1) The sound levels refer to the unit at full load, in the rated test conditions. The sound pressure level refers to a distance of 1m from the external surface of the units operating in an open field.
- (2) In places where temperatures drop under -5°C for a considerable number of hours a year, it is recommended to use EHPCX - electric duct heaters kit.

All the data provided meets standard EN 14511:2013 and refers to an available head of 50 Pa. When in cooling mode it is possible that the unit is operating at a reduced flow to ensure a specific humidity for the air introduced into the environment in keeping with the setpoint.

A7 External air temperature 7°C D.B./ 6°C W.B., Exhaust air temperature 20°C D.B./ 15°C W.B.
 A-5 External air temperature -5°C D.B./ -5,4°C W.B., Exhaust air temperature 20°C D.B./ 15°C W.B.
 A30 External air temperature 30°C D.B./ 22°C W.B., Exhaust air temperature 27°C D.B./ 19°C W.B.
 A35 External air temperature 35°C D.B./ 24°C W.B., Exhaust air temperature 27°C D.B./ 19°C W.B.

accessories

- ▶ **FAEX** Kit of exhaust air filter (sizes 200÷500)
- ▶ **FESX** Electronic filter kit
- ▶ **EHPCX** Preheating elements in duct
- ▶ **CMMBX** Serial communication module to supervisor (Modbus)
- ▶ **CDPX** Condensate drain pump (Standard sizes 70-120)
- ▶ **HSE3LX** Immersed electrode steam humidifier for ELFOFresh DN200 (sizes 200÷500)
- ▶ **HSE3MX** Immersed electrode steam humidifier for ELFOFresh DN250 (sizes 200÷500)
- ▶ **HIDI5²BX** Temperature and humidity thermostat / Remote keyboard with touch display for recessed (box 503) or wall mounting. White
- ▶ **HIDI5²NX** Temperature and humidity thermostat / Remote keyboard with touch display for recessed (box 503) or wall mounting. Black

Key to symbols:

- Accessories separately supplied